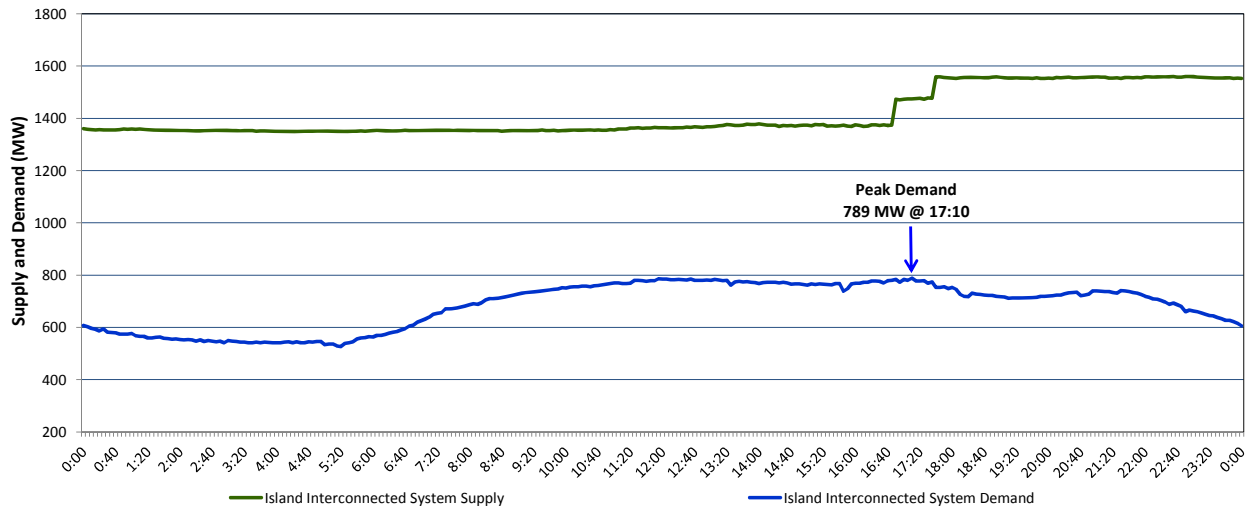


Newfoundland Labrador Hydro (NLH) Supply and Demand Status Report Filed Thursday, August 24, 2017

Section 1 Island Interconnected System Supply and Demand Actual 24 Hour System Performance For Wednesday, August 23, 2017



Supply Notes For August 23, 2017

- 1,2
- A As of 1858 hours, June 22, 2017, Stephenville Gas Turbine available at 25 MW (50 MW).
 - B As of 0938 hours, June 23, 2017, Holyrood Unit 1 unavailable due to planned outage 120 MW (170 MW).
 - C As of 0827 hours, July 31, 2017, Holyrood Unit 2 unavailable due to planned outage 165 MW (170 MW).
 - D As of 1250 hours, August 06, 2017, Upper Salmon Unit unavailable due to planned outage (84 MW).
 - E As of 1333 hours, August 17, 2017, Hardwoods Gas Turbine available at 25 MW (50 MW).
 - F At 1646 hours, August 23, 2017, Holyrood Unit 3 available at full capacity (150 MW).
 - G At 1739 hours, August 23, 2017, Bay d'Espoir Unit 6 available (76.5 MW).

Section 2 Island Interconnected Supply and Demand

Thu, Aug 24, 2017	Island System Outlook ³	Seven-Day Forecast	Temperature (°C)		Island System Daily Peak Demand (MW) Forecast
			Morning	Evening	
Available Island System Supply: ⁵	1,540 MW	Thursday, August 24, 2017	21	21	795
NLH Generation: ⁴	1,220 MW	Friday, August 25, 2017	20	20	790
NLH Power Purchases: ⁶	130 MW	Saturday, August 26, 2017	15	11	810
Other Island Generation:	190 MW	Sunday, August 27, 2017	10	12	805
Current St. John's Temperature:	20 °C	Monday, August 28, 2017	13	12	810
Current St. John's Windchill:	N/A °C	Tuesday, August 29, 2017	14	14	805
7-Day Island Peak Demand Forecast:	815 MW	Wednesday, August 30, 2017	16	15	815

Supply Notes For August 24, 2017

- 3
- Notes:
1. Generation outages for running and corrective maintenance are included. These are not unusual for power system operations. They generally do not impact customer supply. The power system operators schedule outages to system equipment whenever possible to coincide with periods when customer demands are low and sufficient supply reserves are available. However, from time to time equipment outages are necessary and reserves may be impacted.
 2. Due to the Island Interconnected System being isolated from the larger North American grid, when there is a sudden loss of large generating units some customer's load must be interrupted for short periods to bring generation output equal to customer demand. This automatic action of power system protection, referred to as under frequency load shedding, is necessary to ensure the integrity and reliability of system equipment. Under frequency events typically occur 5 to 8 times per year on the Island Interconnected System and the resultant customer load interruptions are generally less than 30 minutes.
 3. As of 0800 Hours.
 4. Gross output including station service at Holyrood (24.5 MW) and improved NLH hydraulic output due to water levels (35 MW).
 5. Gross output from all Island sources (including Note 4).
 6. NLH Power Purchases include: CBPP Co-Gen, Nalcor Exploits, Rattle Brook, Star Lake, Vale capacity assistance (when applicable), and Wind Generation.

Section 3 Island Peak Demand Information Previous Day Actual Peak and Current Day Forecast Peak

Wed, Aug 23, 2017	Actual Island Peak Demand ⁸	17:10	789 MW
Thu, Aug 24, 2017	Forecast Island Peak Demand		795 MW

- Notes: 8. Island Demand is supplied by NLH generation and purchases, plus generation owned and operated by Newfoundland Power and Corner Brook Pulp & Paper (Deer Lake Power, DLP).